

UNIQUE F&B REFURBISHMENT OPPORTUNITY

Subject to Vacant possession

Circa
1m
Annual
Footfall



Indicative images

TO LET

Units 16, 16a-18a

4,467 sq.ft

(415 sq.m)

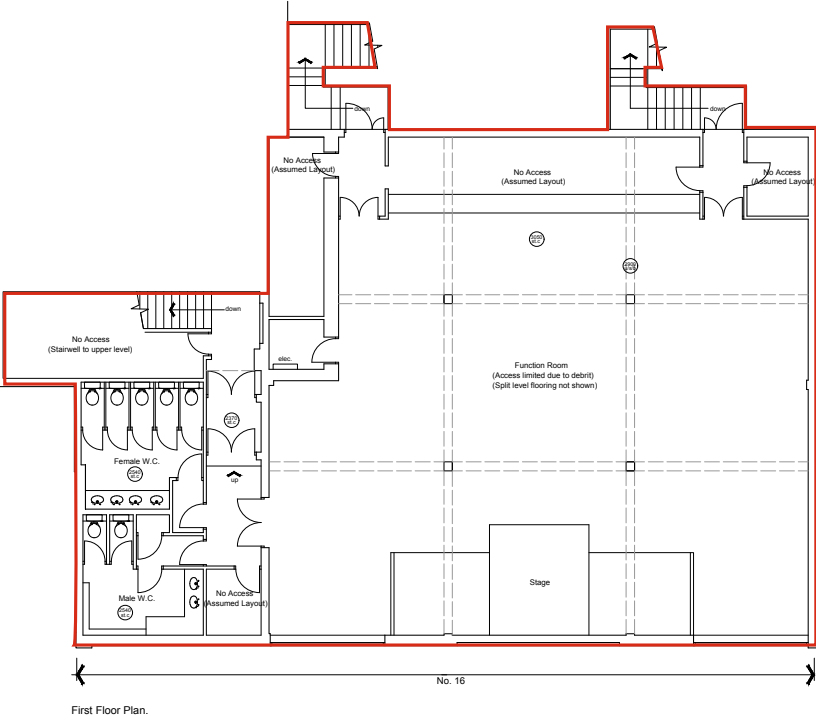
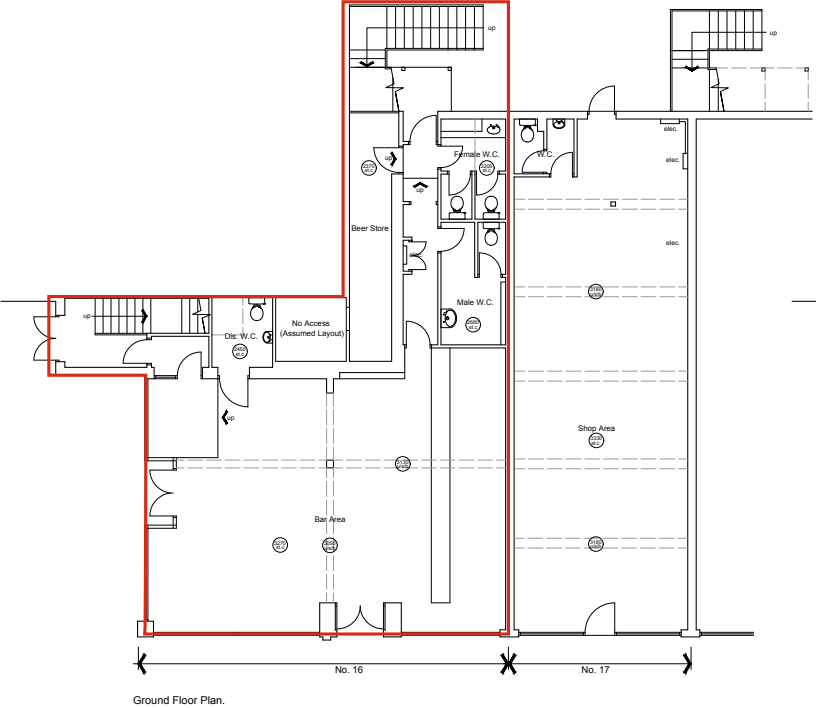
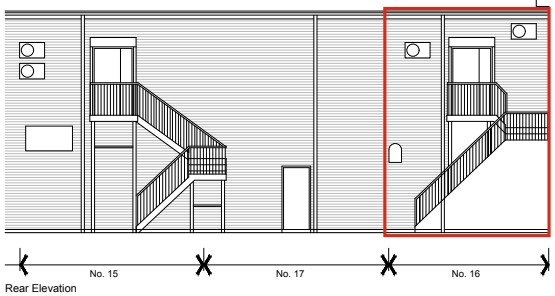
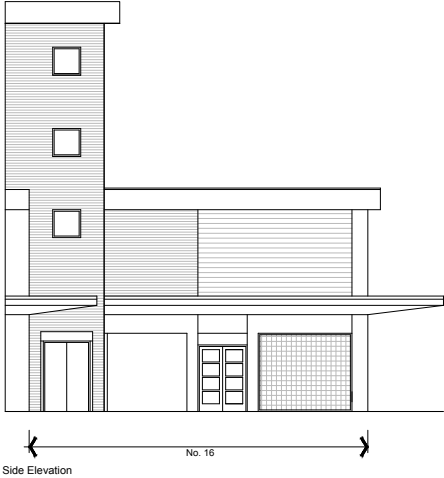
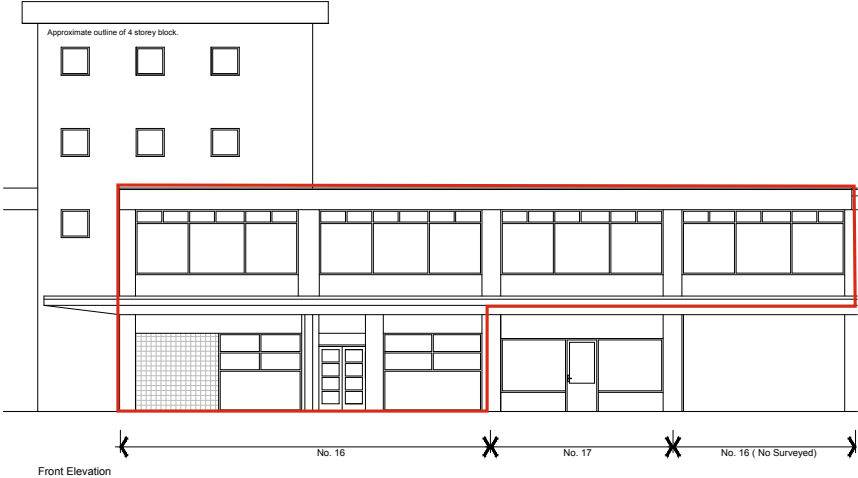
Units 16, 16a-18a, Marian Square, Netherton, Bootle, Liverpool, Merseyside, L30 5QA

- Free on road parking
- Large residential population within walking distance
- Unique opportunity to refurbish a prime corner site with no immediate competition

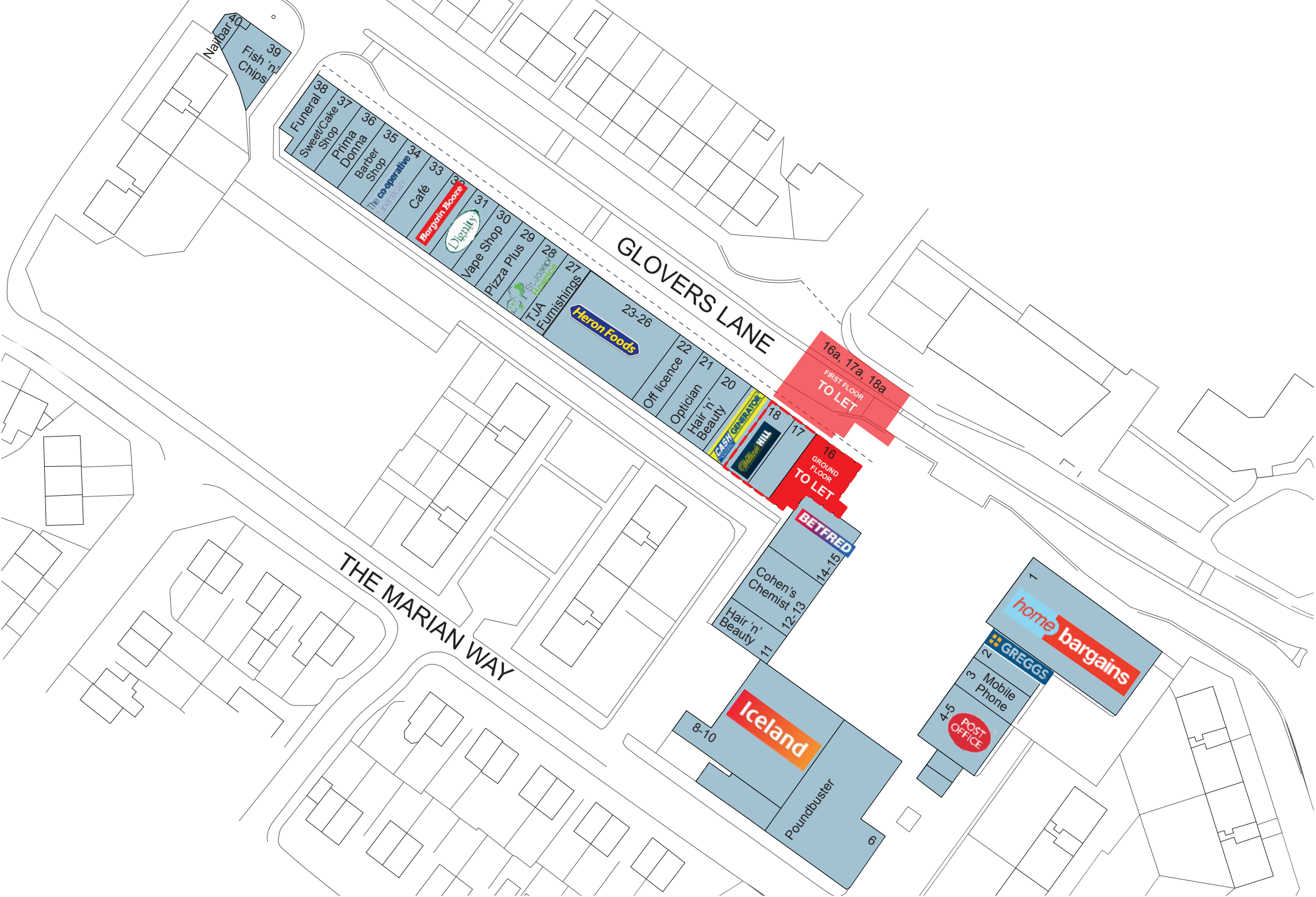
LCP

01384 405631
www.lcpproperties.co.uk

Units 16, 16a-18a, Marian Square, Netherton, Bootle, Liverpool, Merseyside, L30 5QA



Units 16, 16a-18a, Marian Square, Netherton, Bootle, Liverpool, Merseyside, L30 5QA



Units 16, 16a-18a, Marian Square, Netherton, Bootle, Liverpool, Merseyside, L30 5QA

Areas (approx. NIA)	Sq.ft	Sq.m
Ground Floor	1,200	111.5
First Floor	3,267	303.5
TOTAL	4,467	415.0

Description

The scheme is in a busy shopping location benefiting from excellent parking provision and a large residential population within walking distance. This offers a unique opportunity to refurbish a prime corner site with no immediate competition. Multiple retailers such as Greggs, Iceland, William Hill & Home Bargains have traded here successfully for years.

Rent

£37,500 per annum.

Rateable Value

Rateable value of £17,750 per annum. Interested parties are advised to make their own enquiries with the local authority.

Services

Mains electricity, water and drainage are connected to the property



Service Charge & Insurance

This unit participates in a service charge. The Landlord will insure the premises the premiums to be recovered from the tenant.

Energy Performance

Further information available upon request.

Planning

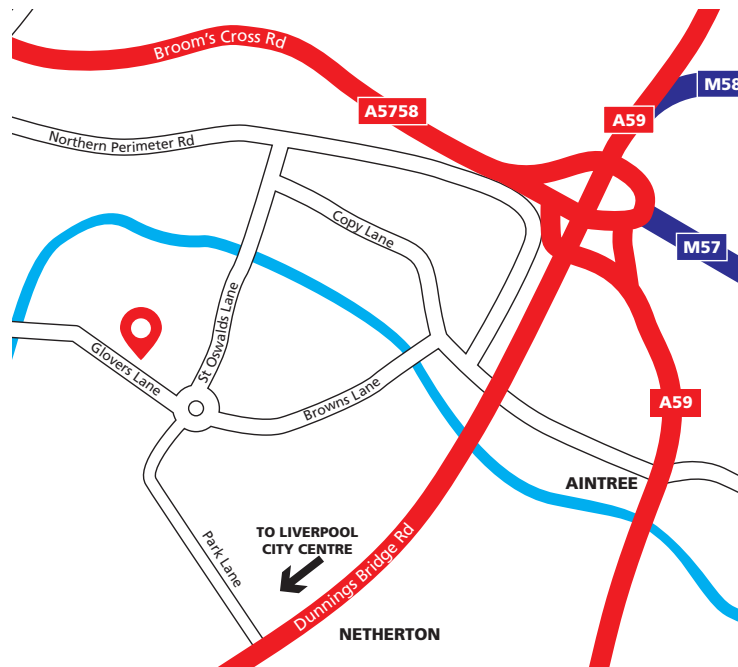
It is the ingoing tenant's responsibility to verify that their intended use is acceptable to the Local Planning Authority.

Legal Costs

Each party is responsible for their own legal costs in connection with the granting of a lease.

Location - L30 5QA

The subject premises are within the popular Marian Square Shopping Parade which is located approximately seven miles north of Liverpool City Centre and is easily accessible from the A59.



Viewing

Strictly via prior appointment:



Matt Kerrigan 07970 837453
mattkerrigan@hwandp.co.uk

Mason Partners
0151 227 1008
MASONPARTNERS.COM

Lee Quinn 07788 188731
leequinn@masonpartners.com

Owned and Managed by

LCP

01384 405631
www.lcpproperties.co.uk

Simon Eatough 07771 764148
SEatough@lcpproperties.co.uk

MISREPRESENTATION ACT, 1967 London & Cambridge Properties Limited (Company Number 02895002) the registered office of which is at LCP House, Pensnett Estate, Kingswinford, West Midlands DY6 7NA its subsidiaries (as defined in section 1156 of the Companies Act 2006) associated companies and employees ("we") give notice that: Whilst these particulars are believed to be correct no guarantee or warranty is given, or implied therein, nor do they form any part of a contract. [We do our best to ensure all information in this brochure is accurate. If you find any inaccurate information, please let us know and where appropriate, we will correct it.] We make no representation that information is accurate and up to date or complete. We accept no liability for any loss or damage caused by inaccurate information. [This brochure gives a large amount of [statistical] information and there will inevitably be errors in it]. Intending purchasers or tenants should not rely on the particulars in this brochure as statements or representations of fact but should satisfy themselves by inspection or otherwise as to the correctness of each of them. We provide this brochure free of charge and on the basis of no liability for the information given. In no event shall we be liable to you for any direct or indirect, or consequential loss, loss of profit, revenue or goodwill arising from your use of the information contained herein. All terms implied by law are excluded to the fullest extent permitted by law. No person in our employment has any authority to make or give any representation or warranty whatsoever in relation to the property. SUBJECT TO CONTRACT. We recommend that legal advice is taken on all documentation before entering into a contract. You should be aware that the Code of Practice on Commercial Leases in England and Wales strongly recommends you seek professional advice from a qualified surveyor, solicitor or licensed conveyancer before agreeing or signing a business tenancy agreement. The Code is available through professional institutions and trade associations or through the website <https://www.rics.org/uk/upholding-professional-standards/sector-standards/real-estate/code-for-leasing-business-premises-1st-edition/>. LCP's privacy notices that apply to its use of your personal information are at www.lcppgroup.co.uk/policies. The privacy notice that applies to you will depend on the nature of your relationship with LCP, and in some cases more than one may apply to you. LCP's privacy policy giving a high level overview of how LCP approaches data protection and your personal information can be found at www.lcpproperties.co.uk/uploads/files/LCP-Privacy-Web-and-Data-Policy-May-2018.pdf.